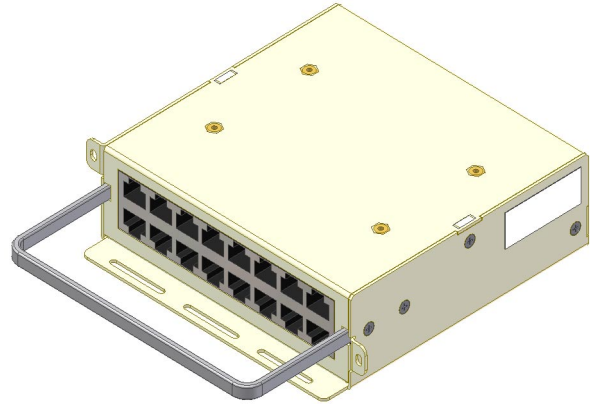


# ELF RJ45C to RJ45C Patch Module

## Model ELF-9716-1900

Telect's ELF family of modules features small-factor "Elf-sized" units ideally suited for deployment terminations at the network's edge.

Telect's ELF RJ45C to RJ45C Patch Module provides patching between 16, shielded RJ45C connectors on the rear and male RJ45C connectors inserted in corresponding shielded RJ45C connectors on the front. Each patch module includes a tie bar on the front, with the ELF chassis (Telect Model ELF-0000-2400) providing tie bar anchorage for the rear.



## Installation Guide

### ! ALERT

**ALERT!** This product must be installed and maintained only by qualified technicians.

### ! ALERT

**ALERT!** These instructions presume you have verified that the Telect equipment being installed is compatible with the rest of the system, including power, ground, circuit protection, signal characteristics, equipment from other vendors, and local codes or ordinances.

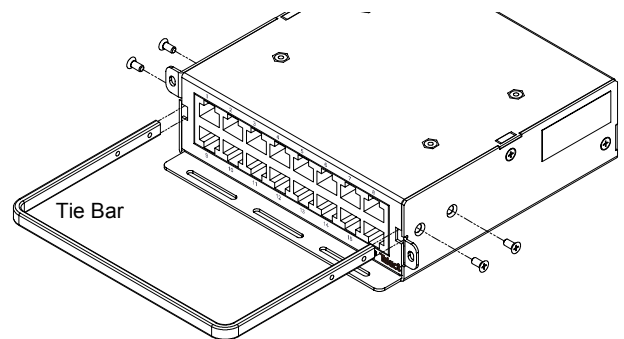
Please read these instructions carefully before beginning installation. If you need assistance call Technical Support at 888-821-4856 (domestic calls), or 509-921-6161 (Option 2), or eMAIL us at [getinfo@telect.com](mailto:getinfo@telect.com)

Inspect equipment after unpacking and compare it to the packing list. Immediately report any shipping damage, defects, or missing parts to Telect at 1-800-551-4567. Keep all documentation that comes with your shipment.

### NOTE

*Telect is not liable for shipping damage. If damaged, notify the carrier and call Telect's Customer Service Department at 1-800-551-4567 (domestic only) or 1-509-926-6000 for further recourse.*

1. Use four, 4-40 x ¼ in. screws (supplied) to attach cable management tie bar to front of module, as shown on the right.
2. Slip module into ELF rack panel (Telect Model ELF-0000-2400) and secure with two, M3 screws provided, as shown in the following illustration

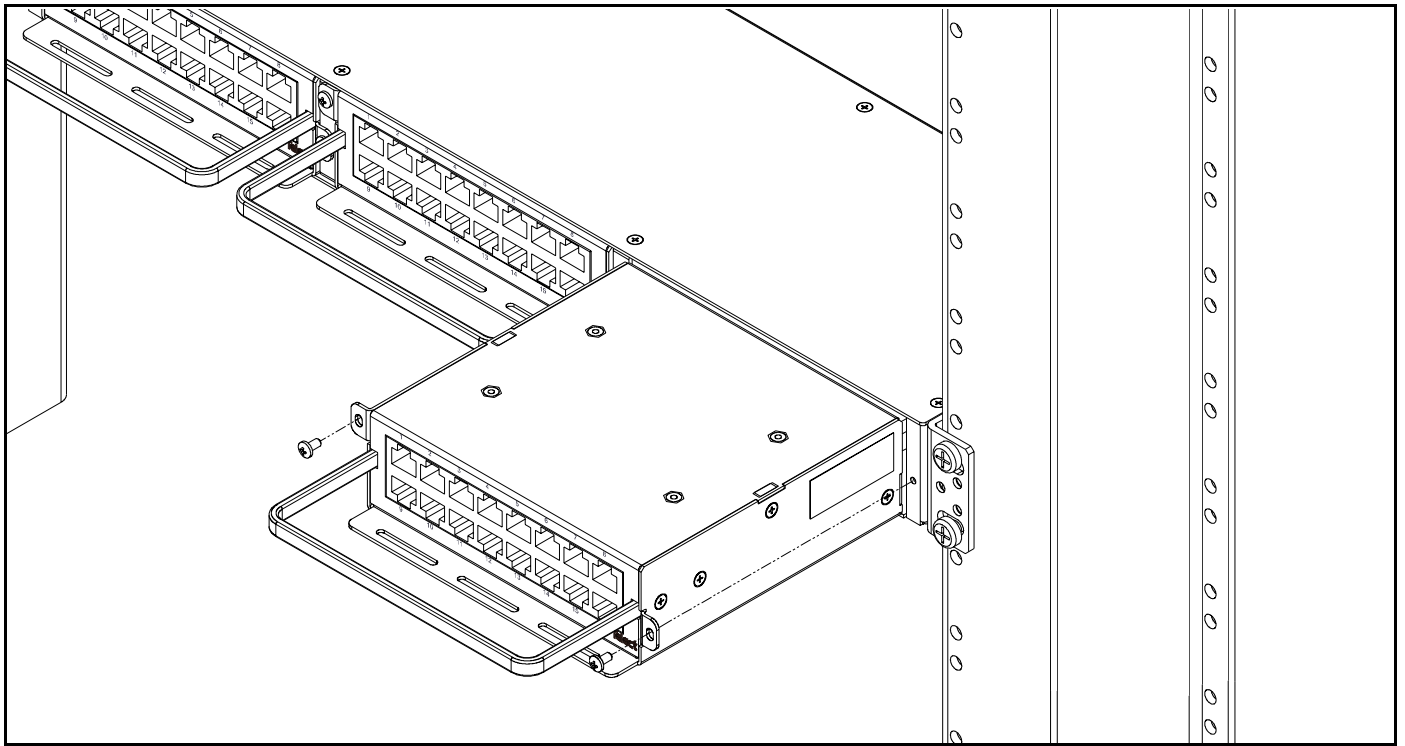


Telect assumes no liability from the application or use of these products. Neither does Telect convey any license under its patent rights or the patent rights of others. This document and the products described herein are subject to change without notice.

129094 A0

Copyright © 2005 Telect, Inc., All Rights Reserved

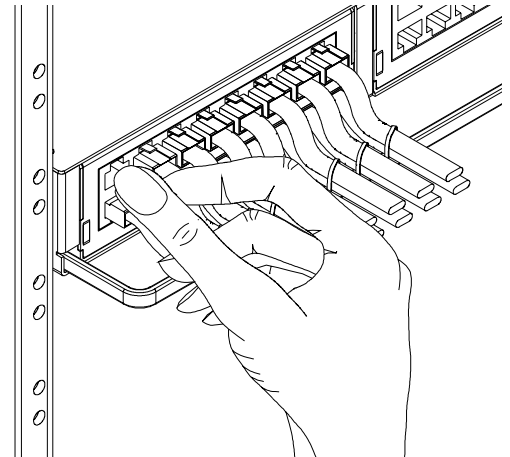
**Telect**  
CONNECTING THE FUTURE®



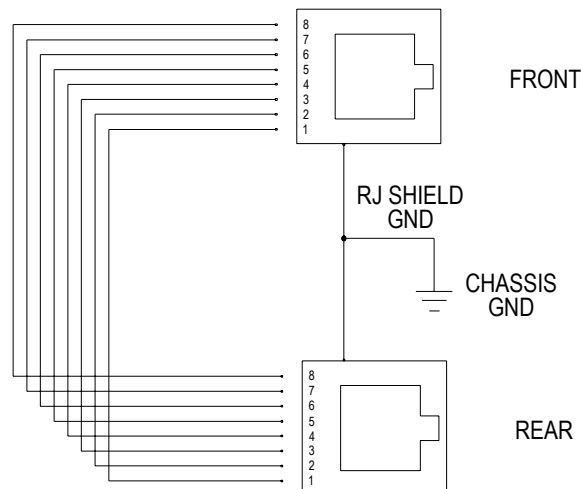
3. Connect up to 16, 100-Ohm cables (CAT 5 or CAT 5E, for example) containing four twisted pairs to RJ45C connectors on rear of module, as shown on the right

Arrange cables such that they lie over tie bars at rear of panel, unless directed otherwise by operating company standards.

4. Use cable tie(s) or lacing to secure cables to panel's tie bar
5. Use RJ45C jacks at front of module for interconnection or patching. Use the tie bar on the front of the module to secure RJ45C cables.

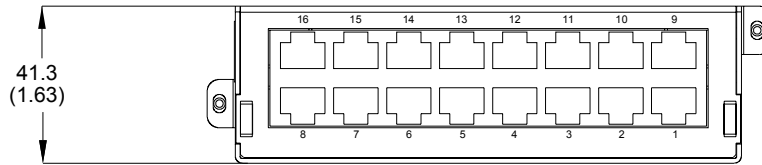


## SCHEMATIC

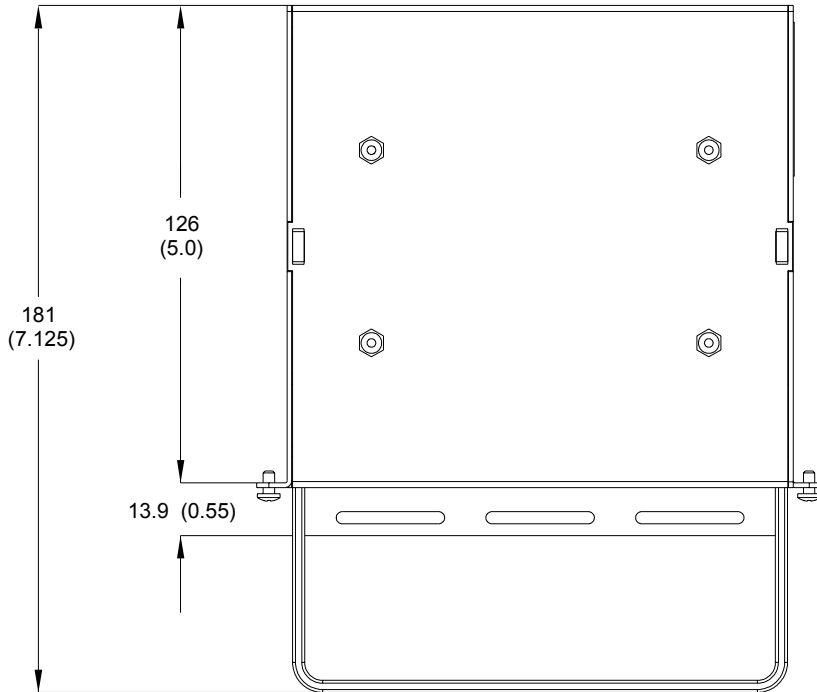


# ASSEMBLY DRAWING

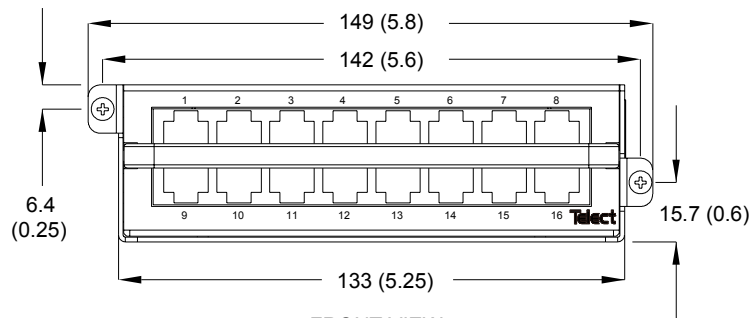
NOTE: Dimensions are in mm (in.)



**REAR VIEW**  
(ROTATED)



**TOP VIEW**



**FRONT VIEW**

Telect, Inc.  
1730 N. Madson St.  
P.O. Box 665 Liberty Lake, WA 99019  
509.926.6000 or 800.551.4567 Fax 509.926.8915  
E-mail: [getinfo@telect.com](mailto:getinfo@telect.com) Internet: <http://www.telect.com>